



ECL Civil Engineering Ltd

18th July 2024

Dear neighbours and road users

Notice of Upcoming Night Road Closures on the B6326, Welcome Break Services

As the works progress towards the new roundabout on the B6326 adjacent the Welcome Break Services (A1 section of the Southern Link Road), we want to provide you with advance notice of a planned three-night road closure. These closures will take place from Wednesday 14th August, to Friday 16th August, with the road fully reopening on the morning of Saturday 17th August.

Why does the road have to close?

To ensure the safety of our workers, the road will need to be closed for three nights to complete the final surfacing. This work requires precise placement of joint lines in the centre of the road, meaning workers will need to be positioned outside these lines. They cannot be in active traffic lanes, as that would be unsafe. It is crucial that our workers operate in designated, secured areas away from moving traffic.

Closure Details:

- **Dates:** Wednesday 14th August – Friday 16th August
- **Times:** Each evening from 20:00 hrs to 06:00 hrs

To complete the new roundabout works, temporary traffic signals will be in operation from 22nd July onwards to conduct preparation works. Additionally, between 14th and 16th August there will be extra lighting and equipment used during night-time hours to facilitate the work. We understand the potential inconvenience and have planned these night works in agreement with the highways team to minimise day-time traffic disruption. These works have been scheduled during the school holidays to further reduce impact.

We apologise for any inconvenience this may cause and thank you in advance for your co-operation. Rest assured, we are committed to minimising disruption and completing the works as swiftly and efficiently as possible.

ECL is proud of our strong collaboration with Urban&Civic, and we prioritise keeping you informed about the Southern Link Road (SLR) construction. For more details from Urban&Civic, please visit www.middlebecknewark.com.

If you have any questions or need further information, please contact us at newark@urbanandcivic.com or info@eclcivils.co.uk, and a member of our team will be happy to assist you.

Thank you for your understanding and co-operation.

With kind regards

Dan Bartram
ECL PROJECT MANAGER

ECL Civil Engineering Ltd

Directors: S. A. Hoare & S. J. Tysoe

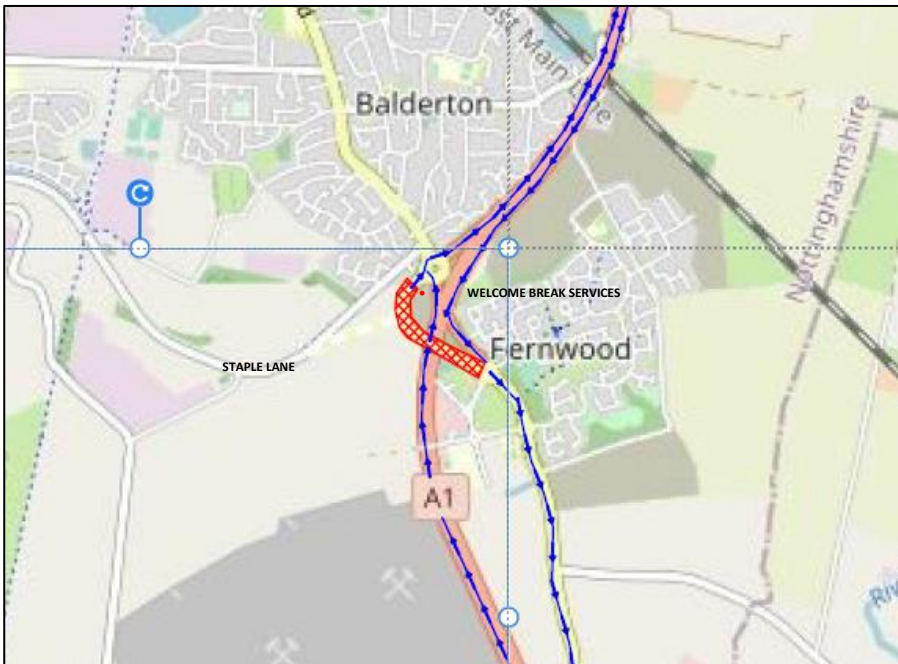
Vanquish House, Wolseley Road, Woburn Road Industrial Estate, Kempston, Bedfordshire MK42 7EF



Telephone: 01582 579812 Website: www.eclcivils.co.uk

Registered in England and Wales No. 03026268



MAP A – Area of the Works



	Work Area (B6326)
	Proposed Diversion Route (below)

MAP B – Diversion Route

The diversion route to be used will be via Coddington to the north and Long Bennington to the south, during the works period.

